



**SAU #28 - Pelham Public Schools
Pelham, NH**

2022-23 Enrollment Projection Report

Table of Contents

Section	Page
Enrollment Summary.....	1
Historical Enrollment Table.....	2
Historical Enrollment Graph.....	3
Projected Enrollment Table.....	4
Projected Enrollment Graph.....	5
Historical & Projected Enrollment Graph.....	6
Historical & Projected Enrollment in Grade Combinations Line Graph.....	7
Historical & Projected Enrollment in Grade Combinations Stacked Column Graph.....	8
Birth to Kindergarten Relationship Graph.....	9
Additional Information	10
New England's PK-12 Enrollment Trends.....	11
Reliability and Use of this Document	12

Enrollment Summary

The global pandemic continues to influence our nation's public health and economic stability in unpredictable ways. As such, it is still too early to identify many of the factors that could impact school enrollments. Over the past school year, we have seen fluctuations in the real estate market and job trends, which have impacted student attendance patterns. Moreover, during the past school year, we have seen how school enrollment patterns can differ substantially from one district to another, with some districts losing students while others experience an influx of students.

We are pleased to send you this report displaying the past, present, and projected enrollments for the District. These ten-year projections are designed to provide the District with yearly, up-to-date enrollment information that can be used by boards and administrators for effective planning and allocation of resources. Included in this report are graphs representing historical and projected grade-by-grade enrollments, as well as historical and projected enrollments in grade combinations. We have received the figures given to us by the District, and we assume that the method of collecting the enrollment data has been consistent from year to year.

Enrollment projections are more reliable in Years #1-4 in the future and less reliable in the "out-years." Projections six to ten years out may serve as a guide to future enrollments and are useful for planning purposes. For more information, please refer to the Reliability and Use of This Document section.

This is the first enrollment projection for Pelham, NH since SY2013-14. Next fall, we can determine the accuracy of NESDEC's enrollment projection for SY2023-24.

Births will stabilize over the next ten years to an average of 115 births per year. Of note, for 2020, 120 births were recorded, and in 2021 there are 124 provisional births, which could lead to higher Kindergarten enrollments for SY 2025-26 and SY2026-27. In most districts, enrollments in Grades 1-8 are very stable environments. However, there have been increases in 4 of the 8 most recent years, leading to a net increase averaging 10 students per year.

Over the next three years, K-5 enrollments are projected to increase by 56 students, Grades 6-8 are projected to decrease by 11 students, and Grades 9-12 are projected to decrease by 88 students, as students move through the grades.

Historical Enrollment

School District: SAU #28 - Pelham, NH

5/18/2023

Historical Enrollment By Grade																			
Birth Year	Births*	School Year	PK	K	1	2	3	4	5	6	7	8	9	10	11	12	UNGR	K-12	PK-12
2007	139	2012-13	5	85	157	164	135	173	180	155	195	185	136	176	157	131	0	2029	2034
2008	125	2013-14	34	61	129	153	159	143	172	176	155	197	177	138	184	139	0	1983	2017
2009	109	2014-15	47	74	115	138	166	160	149	173	178	152	183	175	136	170	0	1969	2016
2010	115	2015-16	47	66	120	122	146	173	166	146	177	181	149	180	167	131	0	1924	1971
2011	111	2016-17	54	76	106	131	123	146	171	166	149	186	179	141	176	159	0	1909	1963
2012	108	2017-18	42	72	125	115	143	134	153	167	164	148	175	169	138	169	0	1872	1914
2013	113	2018-19	58	87	119	114	116	142	136	155	168	165	140	170	167	140	0	1819	1877
2014	123	2019-20	66	78	120	116	118	116	144	136	153	164	135	132	168	164	0	1744	1810
2015	103	2020-21	41	74	115	123	123	117	117	141	138	154	147	141	138	175	0	1703	1744
2016	113	2021-22	50	82	101	116	122	124	120	110	134	139	146	148	142	141	0	1625	1675
2017	108	2022-23	62	98	128	109	110	123	126	116	108	132	140	145	153	143	0	1631	1693

*Birth data provided by Public Health Vital Records Departments in each state.

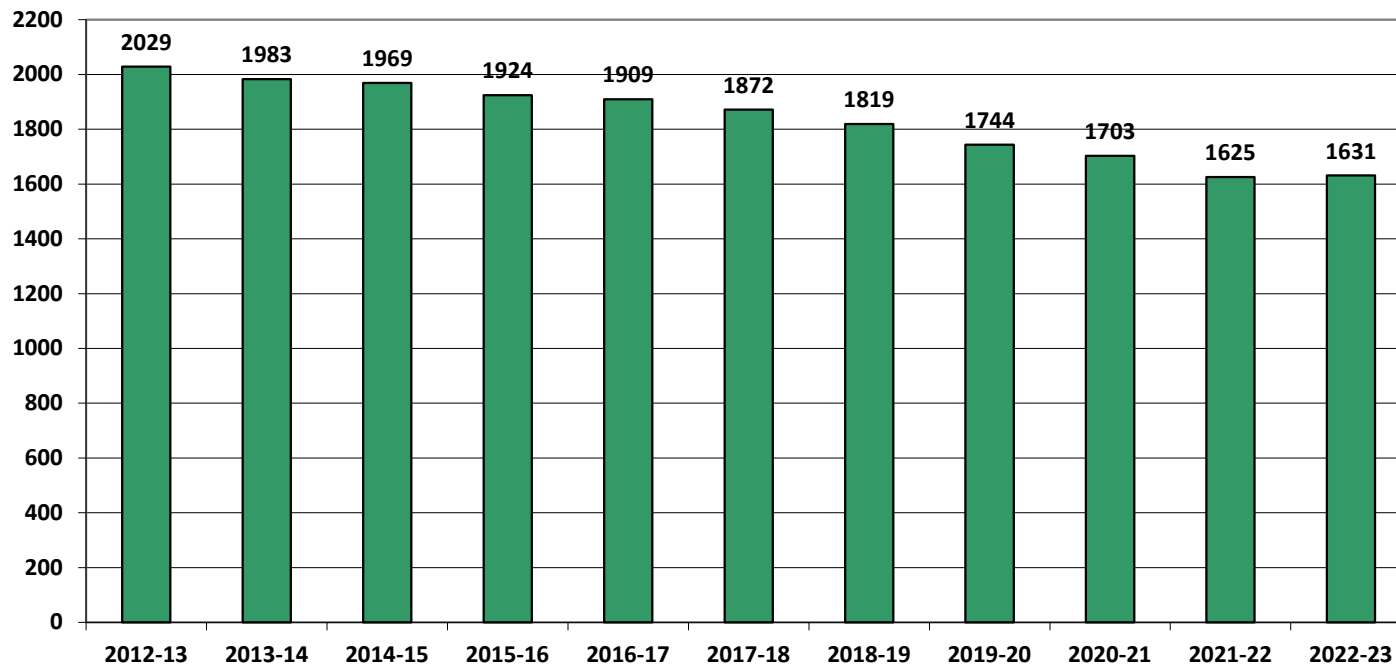
** < 10 Not reported, to protect subgroups with fewer than 10 students.

Historical Enrollment in Grade Combinations									
Year	PK-5	K-5	K-8	K-4	5-8	6-8	7-8	6-12	9-12
2012-13	899	894	1429	714	715	535	380	1135	600
2013-14	851	817	1345	645	700	528	352	1166	638
2014-15	849	802	1305	653	652	503	330	1167	664
2015-16	840	793	1297	627	670	504	358	1131	627
2016-17	807	753	1254	582	672	501	335	1156	655
2017-18	784	742	1221	589	632	479	312	1130	651
2018-19	772	714	1202	578	624	488	333	1105	617
2019-20	758	692	1145	548	597	453	317	1052	599
2020-21	710	669	1102	552	550	433	292	1034	601
2021-22	715	665	1048	545	503	383	273	960	577
2022-23	756	694	1050	568	482	356	240	937	581

Historical Percentage Changes			
Year	K-12	Diff.	%
2012-13	2029	0	0.0%
2013-14	1983	-46	-2.3%
2014-15	1969	-14	-0.7%
2015-16	1924	-45	-2.3%
2016-17	1909	-15	-0.8%
2017-18	1872	-37	-1.9%
2018-19	1819	-53	-2.8%
2019-20	1744	-75	-4.1%
2020-21	1703	-41	-2.4%
2021-22	1625	-78	-4.6%
2022-23	1631	6	0.4%
Change		-398	-19.6%

Historical Enrollment

K-12, School Years 2012-13 to 2022-23



Projected Enrollment

School District: SAU #28 - Pelham, NH

5/18/2023

Enrollment Projections By Grade*																				
Birth Year	Births*		School Year	PK	K	1	2	3	4	5	6	7	8	9	10	11	12	UNGR	K-12	PK-12
2017	108		2022-23	62	98	128	109	110	123	126	116	108	132	140	145	153	143		1631	1693
2018	109		2023-24	62	85	147	133	109	110	125	121	114	108	125	142	149	157		1625	1687
2019	109		2024-25	62	85	127	153	133	109	112	120	119	114	103	127	146	152		1600	1662
2020	120		2025-26	62	94	127	132	153	133	111	108	118	119	108	105	131	149		1588	1650
2021	124	(prov.)	2026-27	63	97	141	132	153	135	107	106	118	113	110	108	134		1586	1649	
2022	114	(est.)	2027-28	63	89	145	146	132	132	156	130	105	106	112	115	113	111		1592	1655
2023	115	(est.)	2028-29	63	90	133	150	146	132	134	150	128	105	101	114	118	116		1617	1680
2024	116	(est.)	2029-30	64	91	135	138	150	146	134	129	147	128	100	102	117	121		1638	1702
2025	118	(est.)	2030-31	64	92	136	140	138	150	148	129	127	147	122	101	105	120		1655	1719
2026	118	(est.)	2031-32	65	92	138	141	140	138	153	142	127	127	140	124	104	107		1673	1738
2027	116	(est.)	2032-33	65	91	138	143	141	140	140	147	139	127	121	142	128	106		1703	1768

Note: Ungraded students (UNGR) often are high school students whose anticipated years of graduation are unknown, or students with special needs - UNGR not included in Grade Combinations for 7-12, 9-12, etc.

Based on an estimate of births

Based on children already born

Based on students already enrolled

*Birth data provided by Public Health Vital Records Departments in each state.

** < 10 Not reported, to protect subgroups with fewer than 10 students.

Projected Enrollment in Grade Combinations*									
Year	PK-5	K-5	K-8	K-4	5-8	6-8	7-8	6-12	9-12
2022-23	756	694	1050	568	482	356	240	937	581
2023-24	771	709	1052	584	468	343	222	916	573
2024-25	781	719	1072	607	465	353	233	881	528
2025-26	812	750	1095	639	456	345	237	838	493
2026-27	853	790	1121	655	466	331	224	796	465
2027-28	863	800	1141	644	497	341	211	792	451
2028-29	848	785	1168	651	517	383	233	832	449
2029-30	858	794	1198	660	538	404	275	844	440
2030-31	868	804	1207	656	551	403	274	851	448
2031-32	867	802	1198	649	549	396	254	871	475
2032-33	858	793	1206	653	553	413	266	910	497

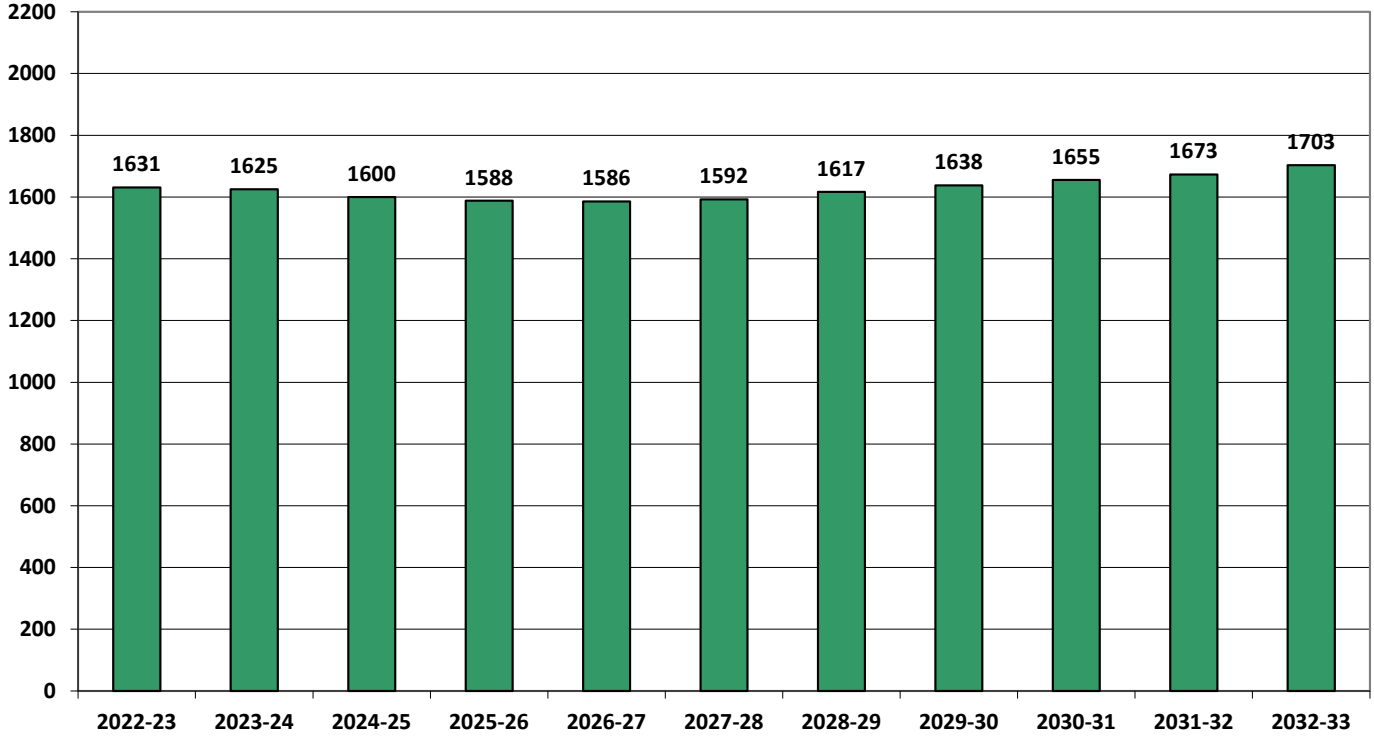
Projected Percentage Changes			
Year	K-12	Diff.	%
2022-23	1631		
2023-24	1625	-6	-0.4%
2024-25	1600	-25	-1.5%
2025-26	1588	-12	-0.8%
2026-27	1586	-2	-0.1%
2027-28	1592	6	0.4%
2028-29	1617	25	1.6%
2029-30	1638	21	1.3%
2030-31	1655	17	1.0%
2031-32	1673	18	1.1%
2032-33	1703	30	1.8%
Change		72	4.4%

*Projections should be updated annually to reflect changes in in/out-migration of families, real estate sales, residential construction, births, and similar factors.



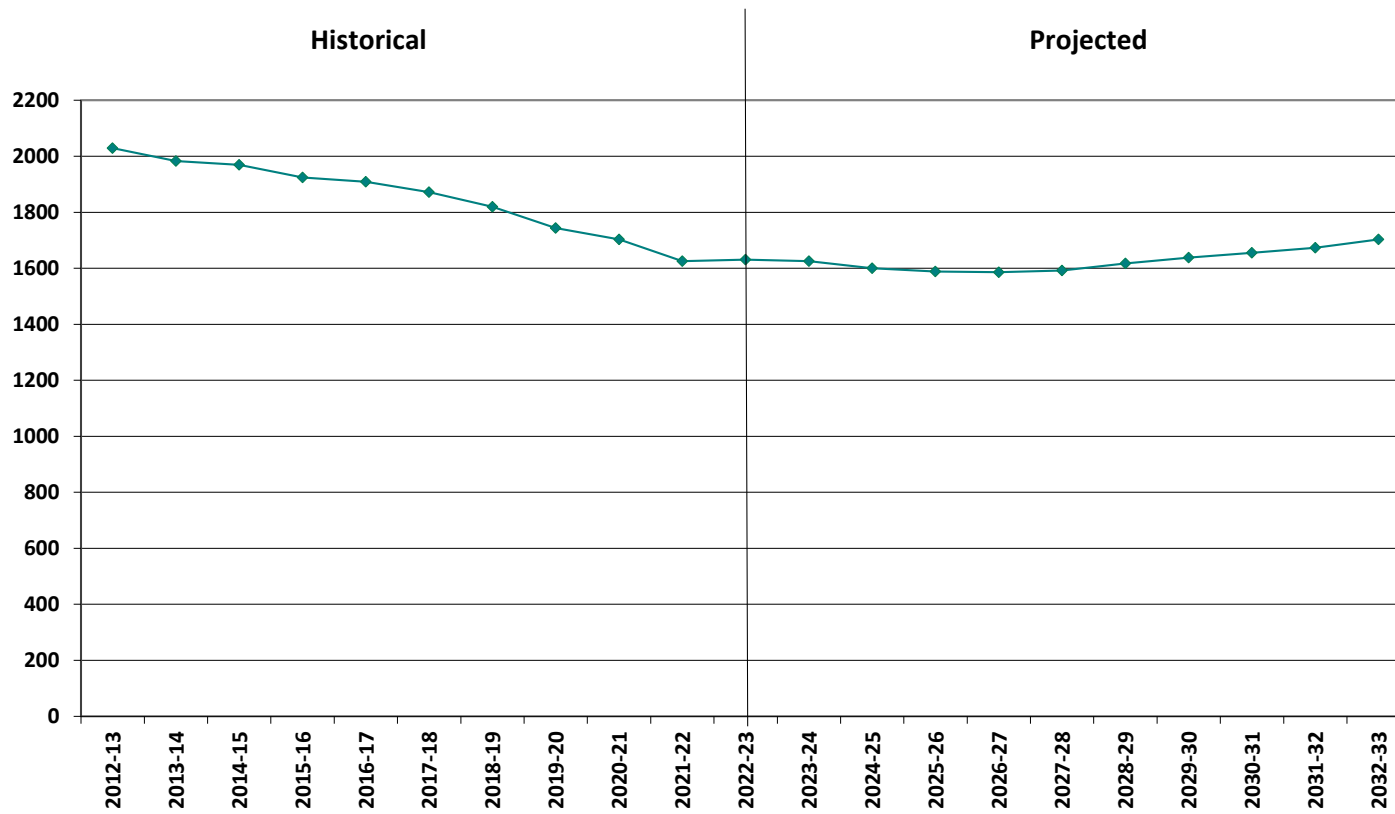
Projected Enrollment

K-12, School Years 2022-23 to 2032-33

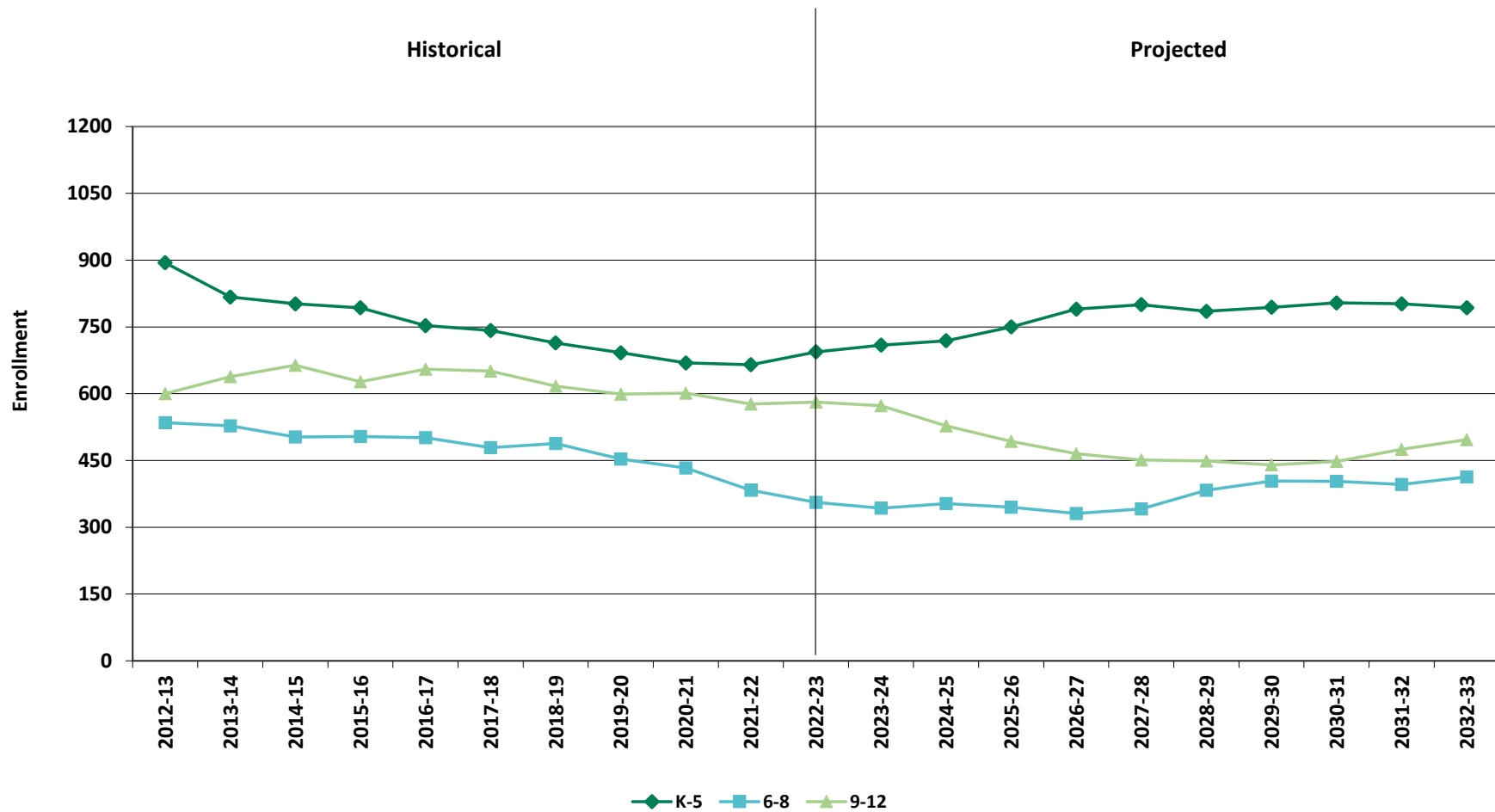


s

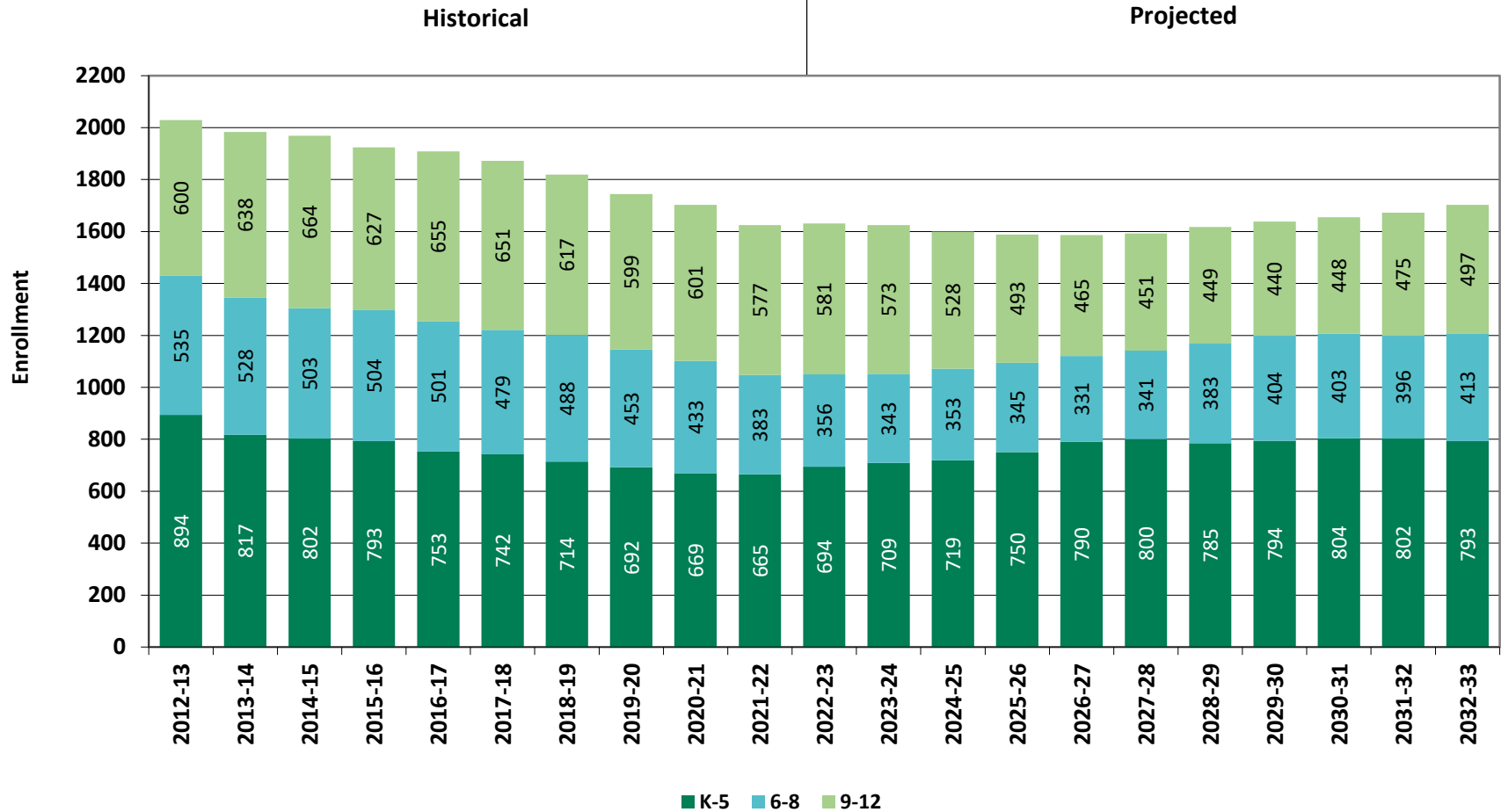
Historical & Projected Enrollment



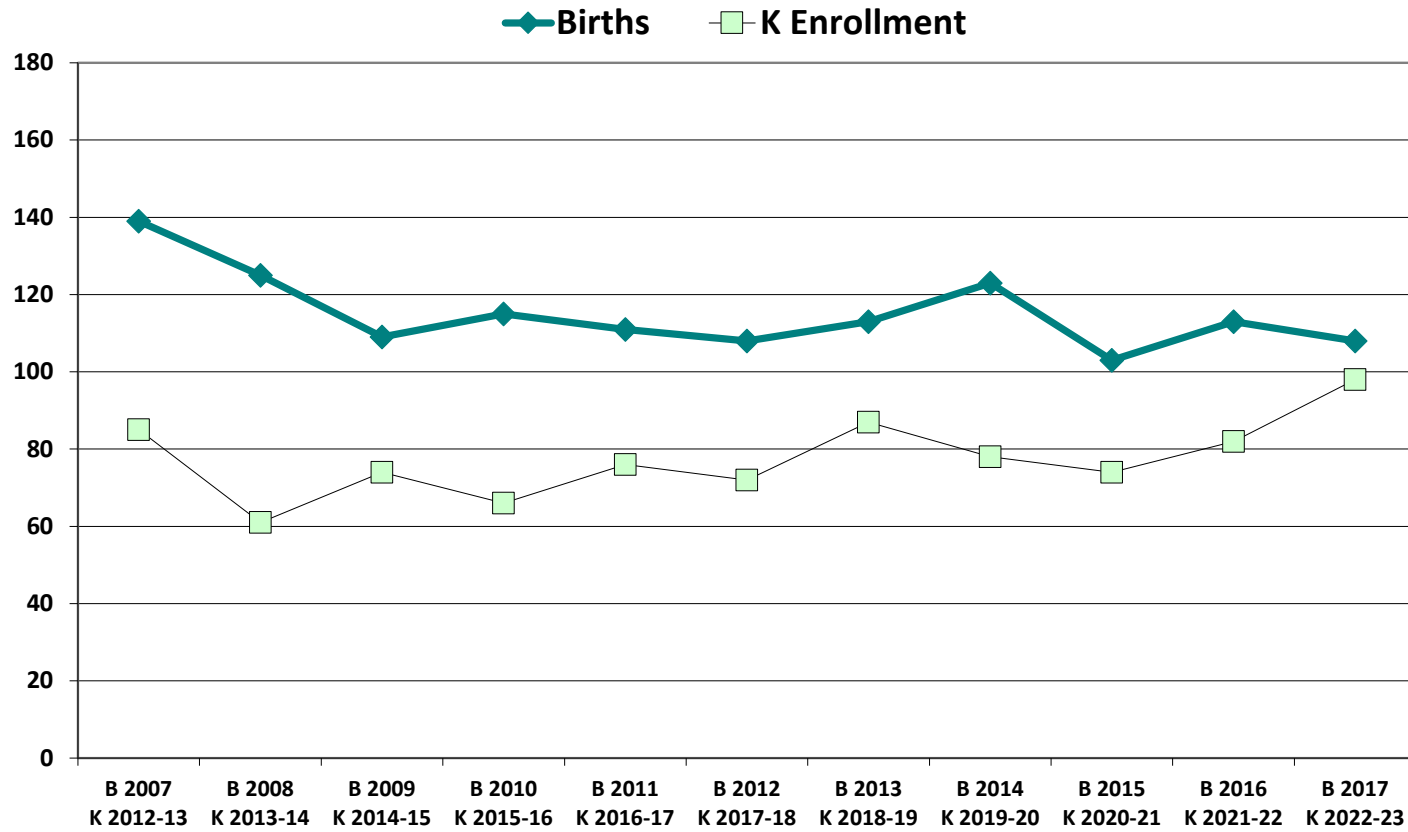
Historical & Projected Enrollments in Grade Combinations



Historical & Projected Enrollments in Grade Combinations



Birth-to-Kindergarten Relationship



Additional Information

Building Permits Issued (Source: HUD)		
Year	Single-Family	Multi-Units
2012	29	2
2018	68	9
2019	47	4
2020	24	6
2021	30	42
2022	37 to date	2 to date

Enrollment History*		
Year	Career-Tech 9-12 Total	Non-Public K-12 Total
2012-13	n/a	n/a
2018-19	n/a	n/a
2019-20	n/a	n/a
2020-21	n/a	n/a
2021-22	n/a	n/a
2022-23	n/a	n/a

Residents in Non-Public Independent and Parochial Schools (General Education)*														
Oct. 1 Enrollment	K	1	2	3	4	5	6	7	8	9	10	11	12	K-12 TOTAL
	n/a	n/a	n/a	n/a	n/a	n/a	n/a	n/a	n/a	n/a	n/a	n/a	n/a	n/a

K-12 Home-Schooled Students*	
2022	< 10 **

K-12 Residents in Charter or Magnet Schools, or Choiced-out*	
2022	0

K-12 Special Education Outplaced Students*	
2022	11

K-12 Tuitioned-In, Choiced-In, & Other Non-Residents*	
2022	0

*The above data were provided by the District, with the exception of building permit data (provided by HUD).

"n/a" signifies that information was not provided by District.

** < 10 Not reported, to protect subgroups with fewer than 10 students.

New England's PK-12 Enrollments Trends

From 2021 to 2030, the US Department of Education anticipates changes in PK-12 enrollment of -3.2% in the South, -6.0% in the West, -3.9% in the Midwest, -6.0% in the Northeast, and a total of -4.4% nationwide.

State	Fall 2021 PK - 12	Fall 2030 Projected	PK-12 Decline	% Change 2021-2030
USA	49,452,864	47,252,500	-2,200,364	-4.4%
CT	508,686	475,600	-33,086	-6.5%
ME	173,215	161,800	-11,415	-6.6%
MA	921,180	879,900	-41,280	-4.5%
NH	170,005	144,600	-25,405	-14.9%
RI	138,566	130,200	-8,366	-6.0%
VT	83,975	74,600	-9,375	-11.2%

Source: U.S. Department of Education, National Center for Education Statistics, *Enrollment in public elementary and secondary schools, by region, state, and jurisdiction: Selected years, fall 1990 through fall 2030*, Table 203.20, March 2023.

Although most New England Districts are seeing a decline in the number of births, NESDEC's experience indicates that the impact on enrollment varies from District to District. Almost half of New England Districts have been growing in PK-12 enrollment, and a similar number are declining (often in rural areas), with the other Districts remaining stable.

Reliability and Use of this Document

PROJECTION METHODOLOGY

Cohort component (survival) technique is a frequently used method of preparing enrollment forecasts. NESDEC uses this method, but modifies it in order to move away from forecasts that are wholly computer- or formula-driven. Such modification permits the incorporation of important, current district-specific information into the generation of enrollment forecasts (such as in/out-migration of students, resident births, HUD-reported building permits, etc.). Percentages are calculated from the historical enrollment data to determine a reliable percentage of increase or decrease in enrollment between any two grades. For example, if 100 students enrolled in Grade 1 in 2018-19 increased to 104 students in Grade 2 in 2019-20, the percentage of survival would be 104%, or a ratio of 1.04. Ratios are calculated between each pair of grades or years in school over several recent years.

After study and analysis of the historical ratios, and based upon a reasonable set of assumptions regarding births, migration rates, retention rates, etc., ratios most indicative of future growth patterns are determined for each pair of grades. The ratios thus selected are applied to the present enrollment statistics to project into future years. The ratios are the key factors in the reliability of the projections, assuming validity of the data at the starting point.

RELIABILITY OF ENROLLMENT PROJECTIONS

Projections can serve as useful guides to school administrators for educational planning. Enrollment projections are more reliable in Years #1-4 in the future and less reliable in the "out-years." Projections six to ten years out may serve as a guide to future enrollments and are useful for planning purposes, but they should be viewed as subject to change given the likelihood of potential shifts in underlying assumptions/trends, such as student migration, births as they relate to Kindergarten enrollment, and other factors.

Projections that are based upon **the children who already are in the district** (the current K-12 population only) will be the most reliable. The second level of reliability will be for those children already **born into the community but not yet old enough to be in school**. The least reliable category is the group for which an estimate must be made **to predict the number of births**, thereby adding additional uncertainty. See these three multi-colored groupings on the "Projected Enrollment" tab.

Annual updates allow for early identification of recent changes in historical trends. When the actual enrollment in a grade is significantly different (higher or lower) from the projected number, it is important (yet difficult) to determine whether this is a one-year aberration or whether a new trend may have begun. **In light of this possibility, NESDEC urges all school districts to have updated enrollment forecasts developed by NESDEC each October.** This service is available at no cost to affiliated school districts.

USING THIS INFORMATION ELECTRONICALLY

If you would like to extract the information contained in this report for your own documents or presentations, you can use screenshots, which can be inserted into PowerPoint slides, Word documents, etc. Because screenshots create graphics, the image is not editable. Please feel free to contact us if you need assistance in this matter, by phone (508-481-9444) or by email (ep@nesdec.org).